

鉄を  
活かす  
人・技

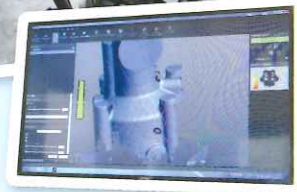


Click here  
for details  
Mew~!



## Characteristics of Tominaga

- The measurement with the 3D scanning
- Analysis by the 3D casting simulation
- We are strength in multi-product, low-volume manufacturing and prototypes We respond flexibly to thin walled casting and thick walled casting, high precision



tomineko



OVER 60 YEARS of EXPERIENCE  
CASTING TECHNOLOGY

# casting

## ● PRODUCTIVE CAPACITY

|                     |                              |
|---------------------|------------------------------|
| Melting capacity    | MAX 500tons/month            |
| Production capacity | 400tons                      |
| Acceptable material | FC200-FC350<br>FCD450-FCD600 |
| Casting ratio       | FC 60% : FCD 40%             |
| Casting weight      | 1kg-2,500kg                  |
| Maximum frame       | 2200mm×2200mm                |



MACHINING TECHNIQUES  
DEVELOPED in JAPAN

# machining

## ● MACHINING CAPACITY

|                    |                        |
|--------------------|------------------------|
| Turning process    | Φ2000mm                |
| Machining          | 3700mm×2000mm×600mm    |
| Machining accuracy | 50μ                    |
| Materials          | cast iron 90% iron 10% |



CUSTOMER SATISFACTION  
is OVER 98% \*According to customer satisfaction survey in 2018

# quality assurance

## ● TESTABILITY

- Inspection of internal defects by UT
- Inspection of external defects by PT
- Component, fluidity, and solidification analysis with each device
- Fast and easy-to-understand measurements by 3Dscanning

## company's outline

株式会社  
**FIM トミナガ**  
Tominaga Co., Ltd.

3981-5, Nunoshida, Kochi-shi, Kochi, 781-5101, JAPAN  
TEL.088-845-1122 FAX.088-845-0800  
URL.<http://ftm-tominaga.co.jp/>

We are going to conduct integrated production, from casting to machining, in order to meet customers' needs.

### WHO WE SUPPLY

- Textile machinery industry
- Injection molding machine industry
- Shipbuilding industry etc



Check!

